

Silicon Motion®, Inc.

SMI macOS InstantView User Manual

Release History

Date	Changes
12/04/2020	First Draft
12/30/2020	Add one function and one important note

Contents

1 Overview	2
2 Requirements	2
2.1 Hardware and OS Support	2
2.2 Languages Support	2
3 How to use SMI MacOS InstantView APP	3
3.1 Running SMI MacOS InstantView APP	3
3.2 Other functions of the SMI MacOS InstantView APP	6
3.2.1 Disconnect/Connect	6
3.2.2 Install SMI MacOS USB Display SW	7
3.2.3 Mirrored Display/Extended Display	9
3.2.4 Change resolution of monitor	10
3.2.5 Other functions	10
4 Important Notes	12
4.1 Install SMI MacOS USB Display SW	12
4.1.1 Kernel Extension driver blocked by OS	12
4.1.2 Screen turn black on macOS Catalina 10.15.x and above macOS	14
4.1.3 macOS USB Display Restrictions	15
4.2 Rosetta installation on Apple M1 MacBook	16



1 Overview

SMI macOS InstantView APP enables your external displays without driver installation. It also help you install display driver without the hassle of download. And automatically Update InstantView app and also display driver and firmware. Keep your docking well maintained and always at top condition. Welcome to the guide of how to use SMI macOS InstantView APP.

2 Requirements

2.1 Hardware and OS Support

The minimum hardware requirement for SMI macOS USB Display APP:

- SMI USB Display Adapter.
- USB: At least one USB 2.0 or USB 3.0 host port.
- If you need to use multiple USB display adapters, please use a high-end MacBook, MacBook Pro 2017 or above.
- Do not plug multiple SMI devices into the same USB hub due to the limited USB3.0 bandwidth.

SMI macOS USB Display APP is available on the following Mac operating system:

- macOS version 10.13.x,10.14.x ,10.15.x, 11.0.x

2.2 Languages Support

The following languages are supported on all supported operating systems for current SMI macOS InstantView APP:

- English
- Simplified Chinese



3 How to use SMI macOS InstantView APP

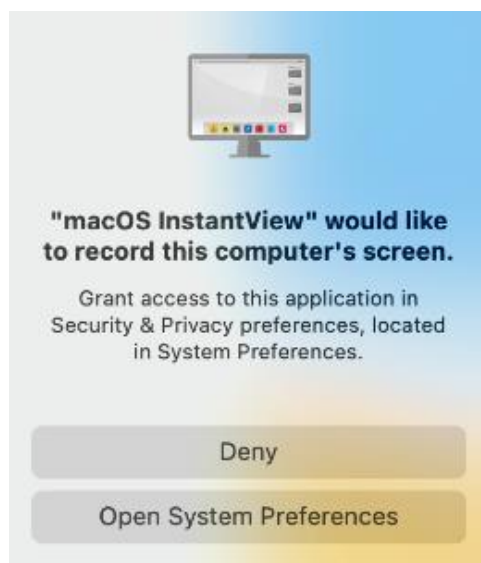
We recommend proceeding with following steps to run and use the new SMI macOS InstantView APP.

3.1 Running SMI macOS InstantView APP

- a) Open USB flash disk named “InstantView”, SMI macOS InstantView APP icon as below:



- b) If you first time run “macOS InstantView”, the MacOS User Account Control will be opened to get user permissions. Then the following pages will be shown, please click “Open System Preferences” and click the lock icon in the lower left corner of the window, then enter your password to allow this.

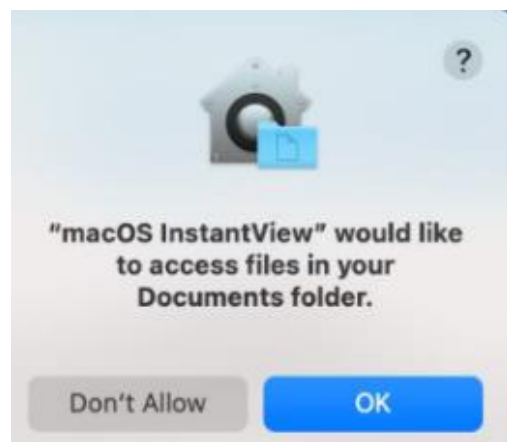




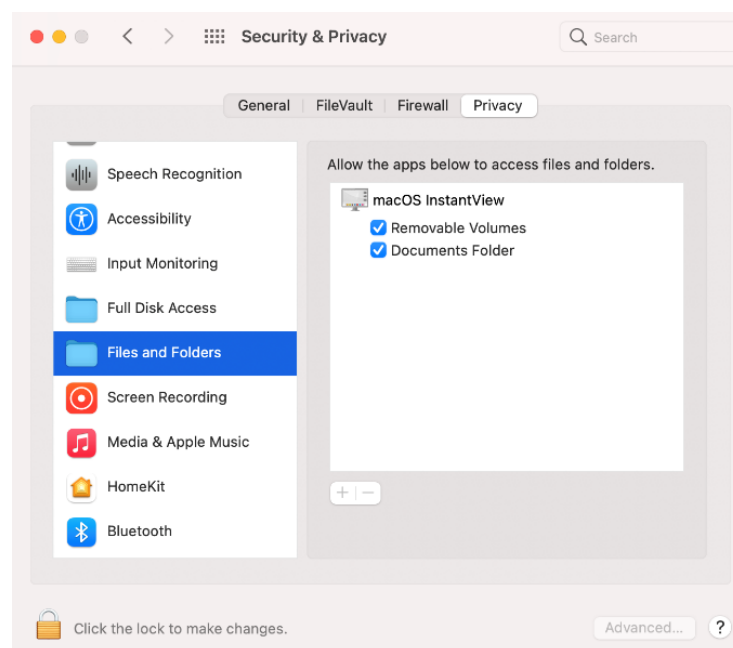
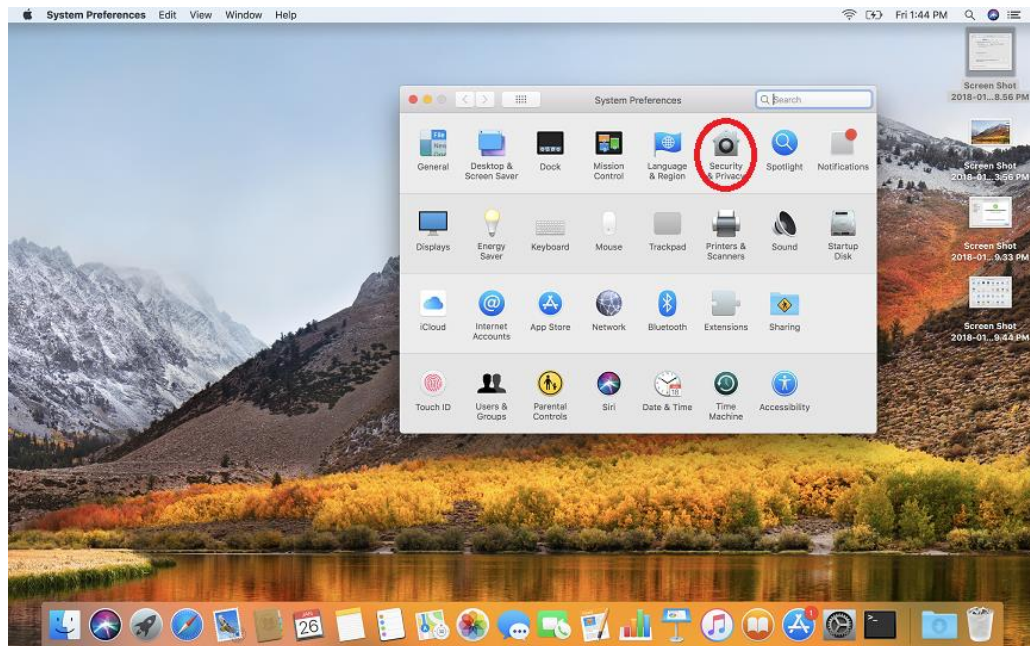
Please click “Quit & Reopen”.



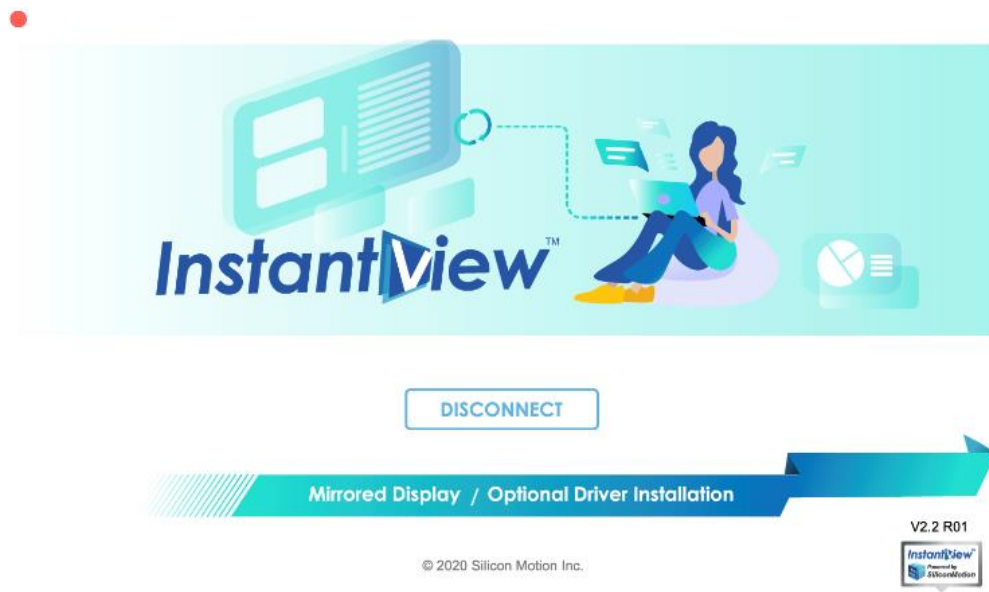
- c) If you first time run “macOS InstantView”, the MacOS User Account Control will be opened to get user permissions. Then the following pages will be shown, please click “OK” and agree the permissions.



If you don't allow the permissions, SMI MacOS InstantView App can't load customer logo normally. This prompts the user to approve the permissions in System Preferences > Security & Privacy > Files and Folders as shown as below:



d) If plug-in SMI Docking Station/Dongle with monitor, then the following page will be shown:

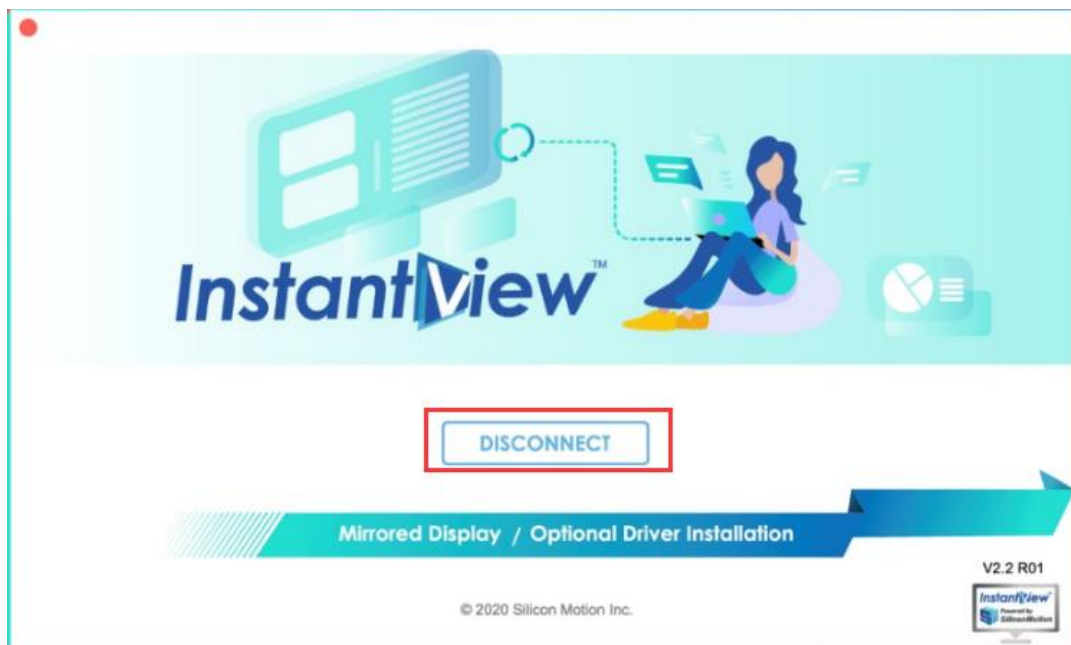


e) Your displays are now working properly.

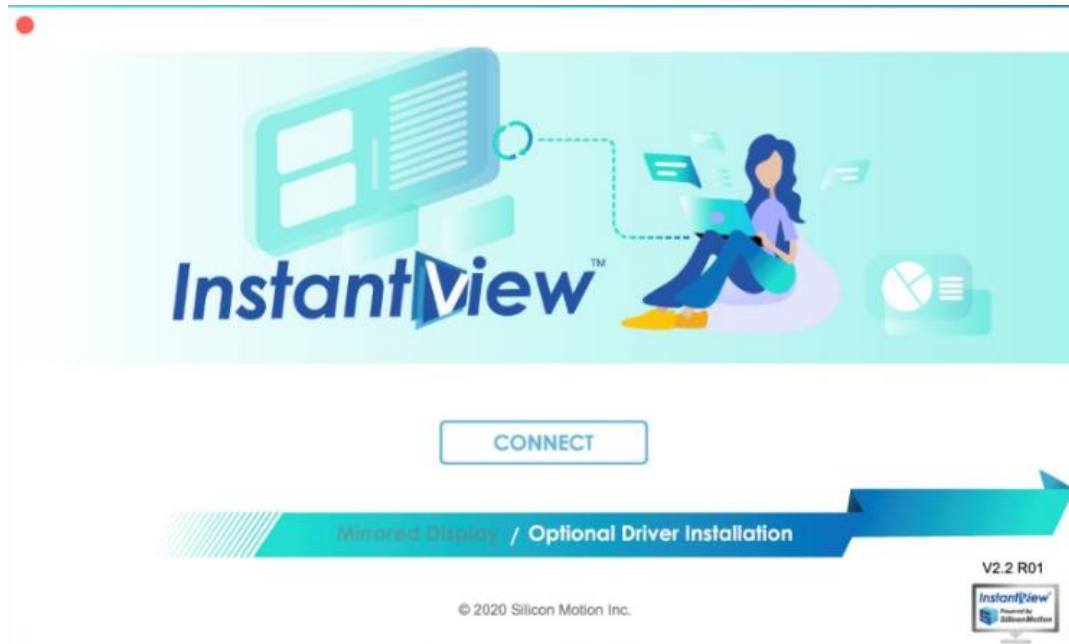
3.2 Other functions of the SMI MacOS InstantView APP

3.2.1 Disconnect/Connect

You can click “Disconnect” when you want to turn off the monitor :



You can click “Connect” when you want to turn on the monitor :



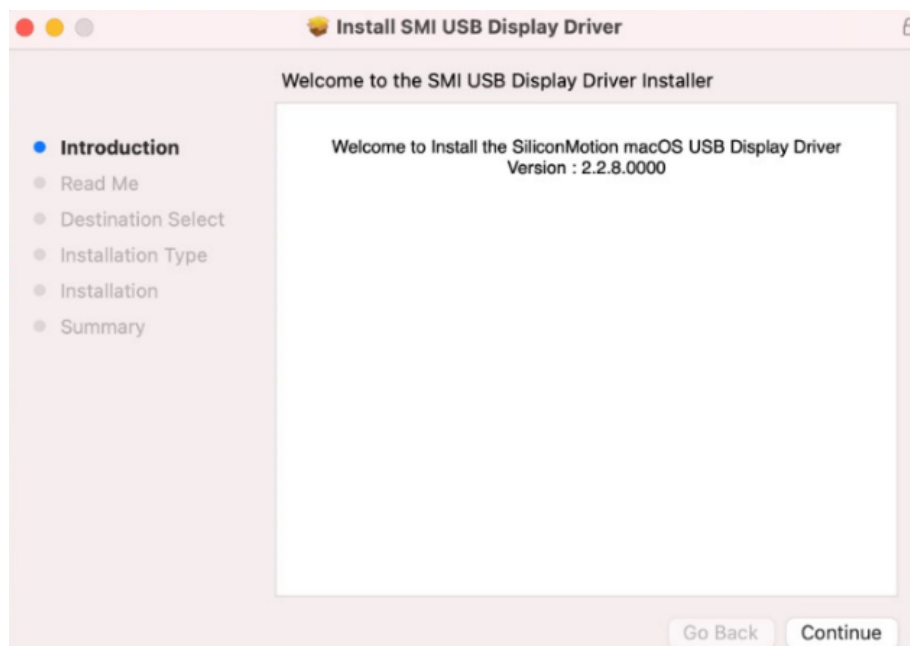
3.2.2 Install SMI MacOS USB Display SW

If you want to install the classic SMI MacOS USB Display driver, recommend proceeding with following steps

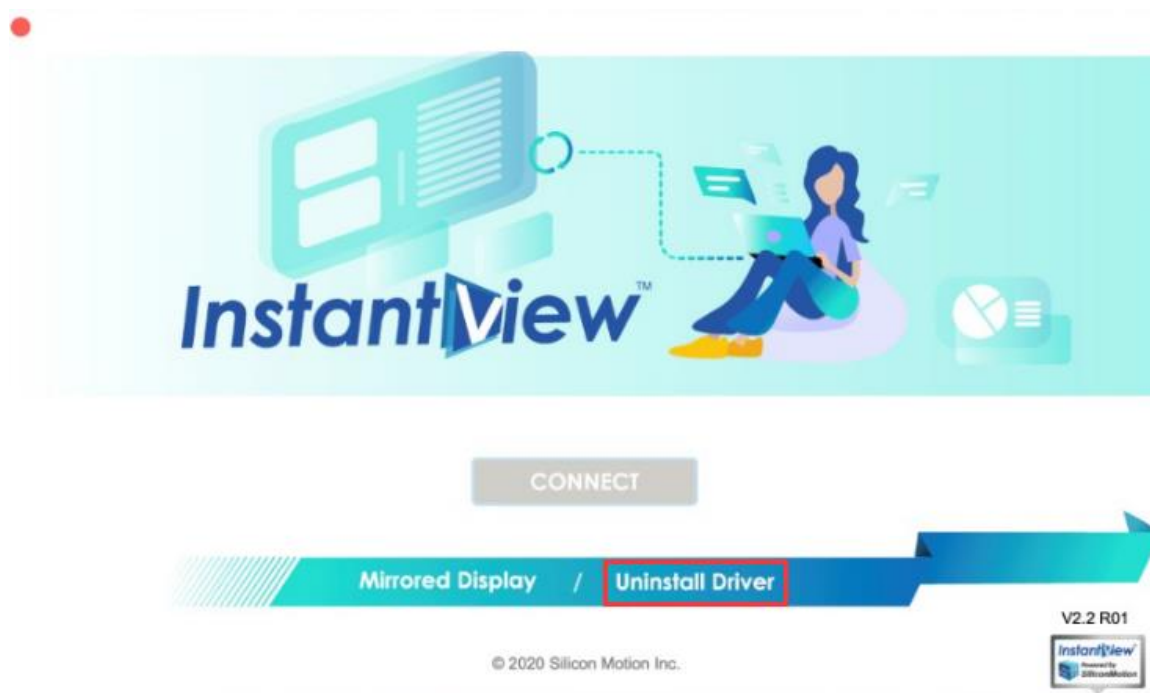
- Click “Optional Driver Installation” button as shown:



- After click “Optional Driver Installation” button, then the following page will be shown:



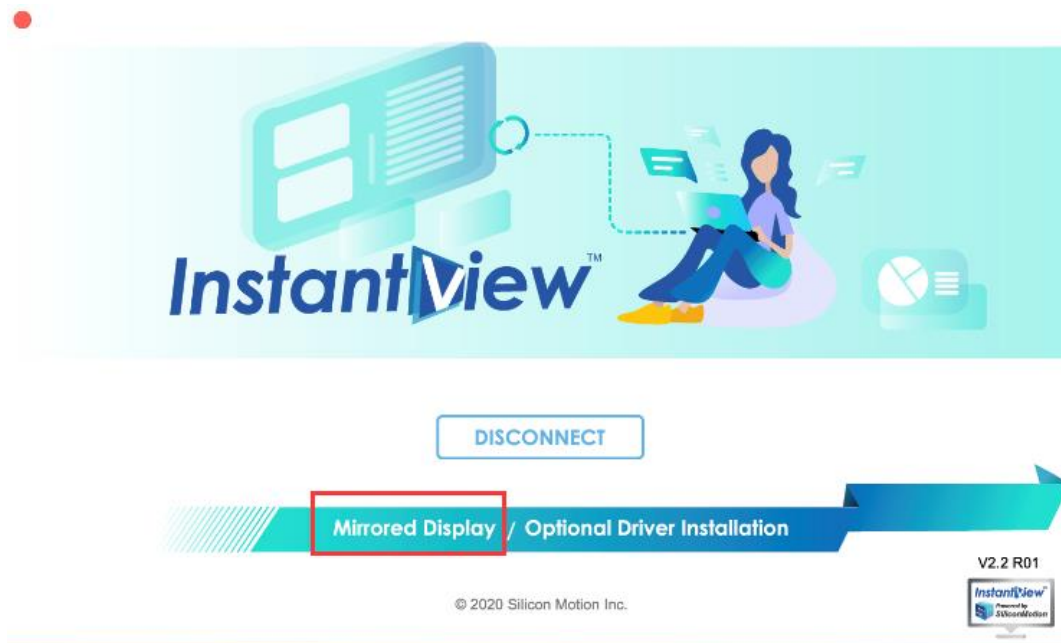
- Please follow the instructions , when finished, must click “Restart” or restart OS manually, after restart, the following page will be shown:



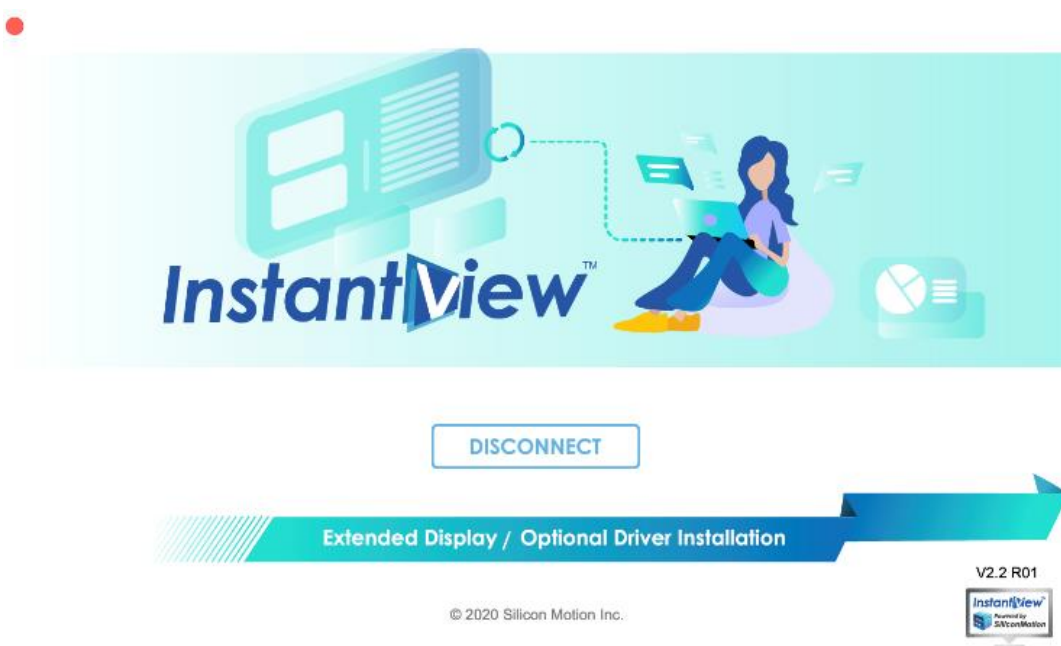
Important note: SMI MacOS InstantView APP can uninstall SMI MacOS USB Display driver when you click “Uninstall Driver” button.

3.2.3 Mirrored Display/Extended Display

You can click “Mirrored Display” when you want to use mirrored display mode, “Mirrored Display” button highlight :

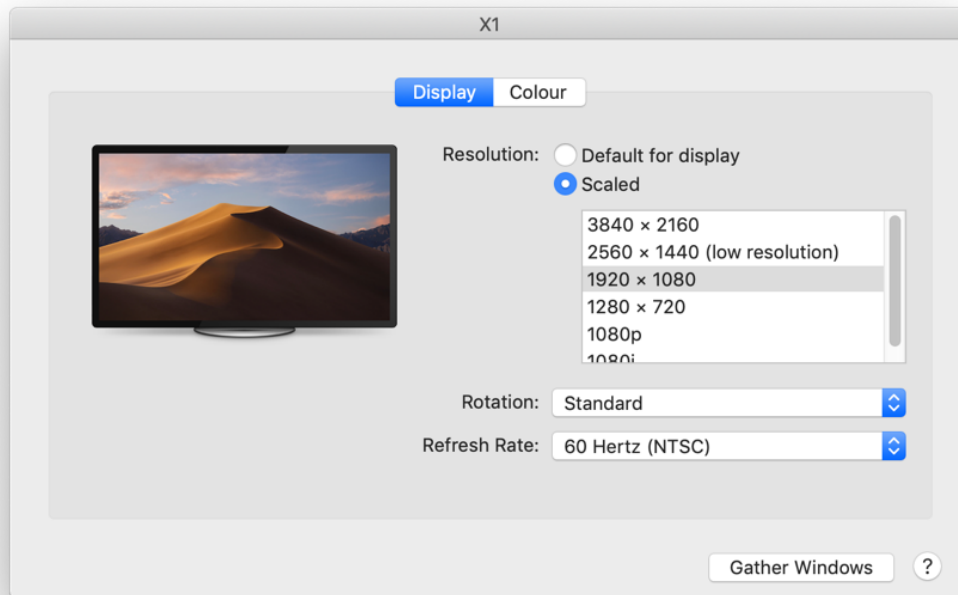


You can click “Extended Display” when you want to use extended display mode, “Extended Display” button highlight :



3.2.4 Change resolution of monitor

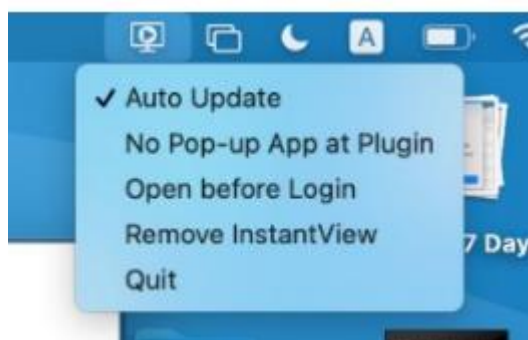
When set SMI MacOS InstantView APP to “Extended Display”, MacOS is choosing scaled 1920x1080 resolution as default. Please check it in "System Preferences".



For "1920x1080(low resolution)" line, monitor draws with 1920x1080 resolution and the same available desktop area. If user prefer real 4K mode, choose "3840x2160".

3.2.5 Other functions

Right click SMI MacOS InstantView icon in taskbar, all functions you can use will be shown:

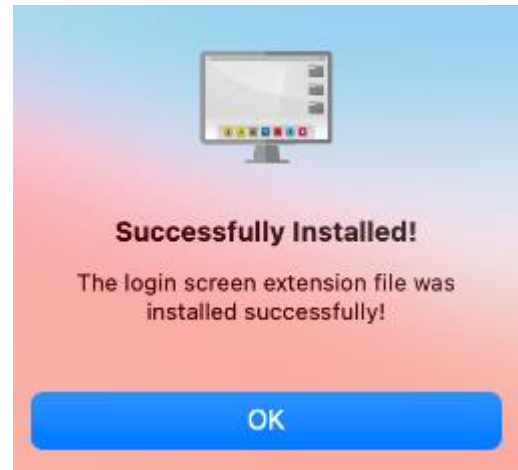
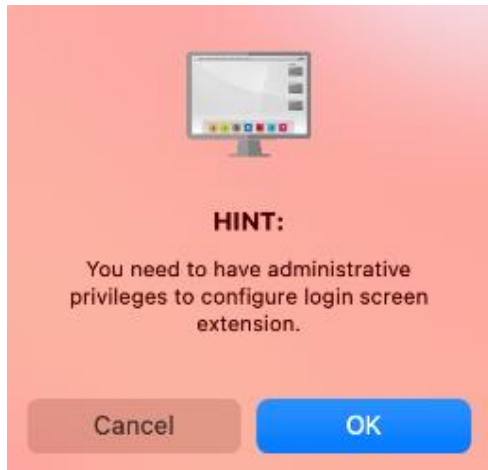


- **Auto Update:** When latest version of APP released, the APP will update automatically.
- **No Pop-up App at Plugin:** Reboot OS, log in or plug in SMI Docking Station/Dongle, the UI of SMI Windows InstantView APP will not pop-up.
- **Open before Login:** Light SMI Display before login system.

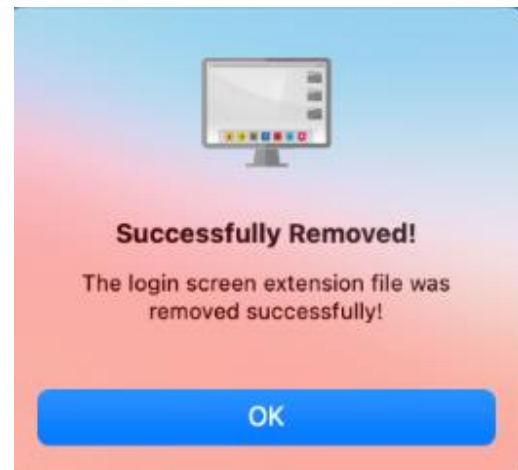
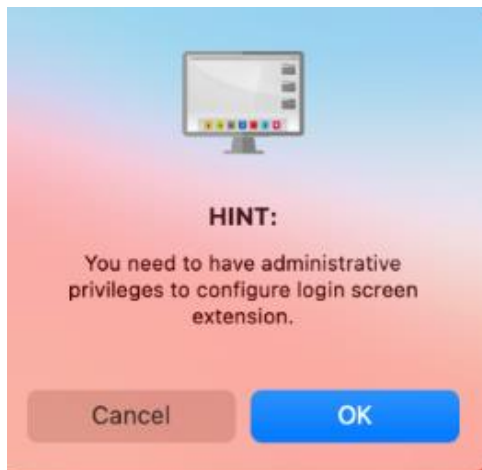
- Remove InstantView: Remove SMI macOS InstantView APP from computer.
- Quit: Exit SMI macOS InstantView APP.

Special instructions of function “Open before Login”:

- Enable function “Open before Login”, macOS User Account Control will be opened to get user permission, please click “OK” agree the permission, the following page will be shown:



- Disable function “Open before Login”, you need agree the permission again, the following page will be shown:



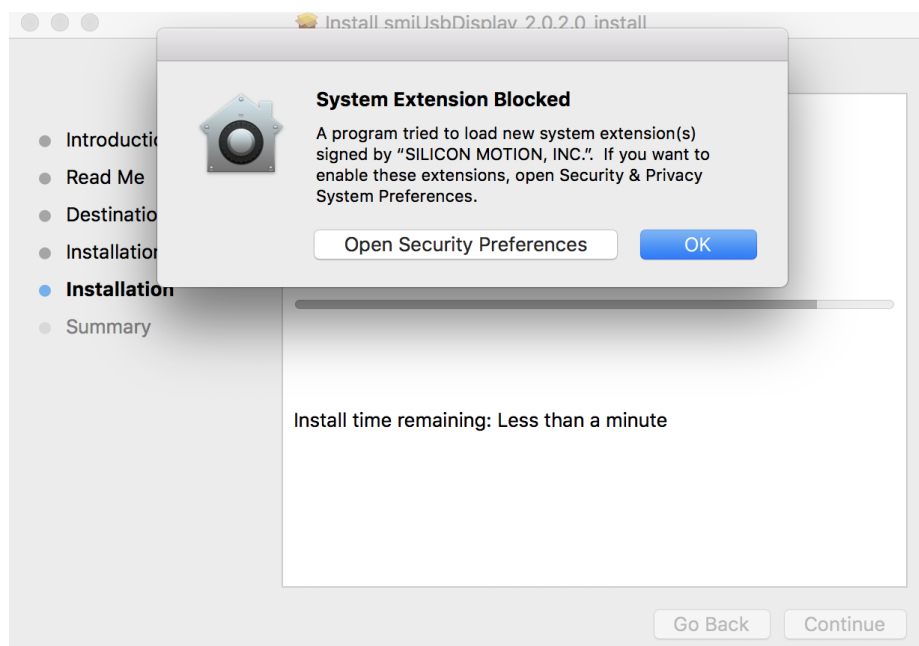
4 Important Notes

4.1 Install SMI MacOS USB Display SW

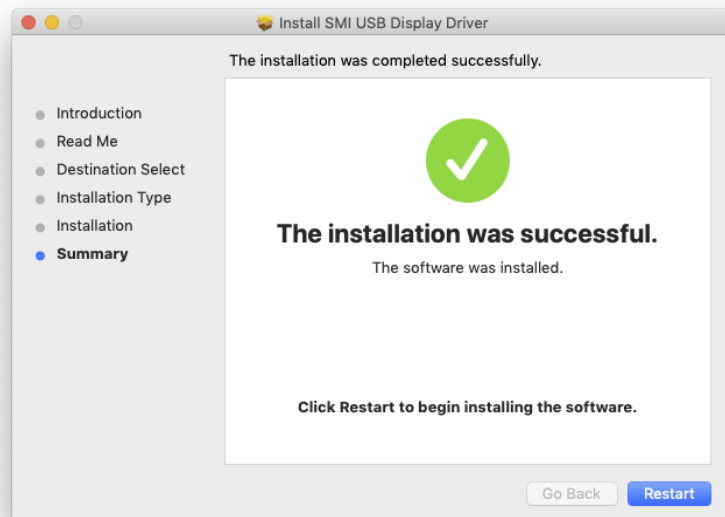
4.1.1 Kernel Extension driver blocked by OS

macOS High Sierra 10.13 and above macOS introduce a new feature that requires user approval before loading new third-party kernel extensions. This feature enforces that only kernel extensions approved by the user will be loaded on a system. When a request is made to load a KEXT that the user has not yet approved, the load request is denied. SiliconMotion USB Display Driver installation includes a system extension (kext) that is affected by the new policy.

At the end of the installation, the operating system should display a "System Extension Blocked" warning message as the diagram below. This warning is not always shown. Even if it is not shown, for new installations the user must enable the kernel extension to use the SiliconMotion USB product.

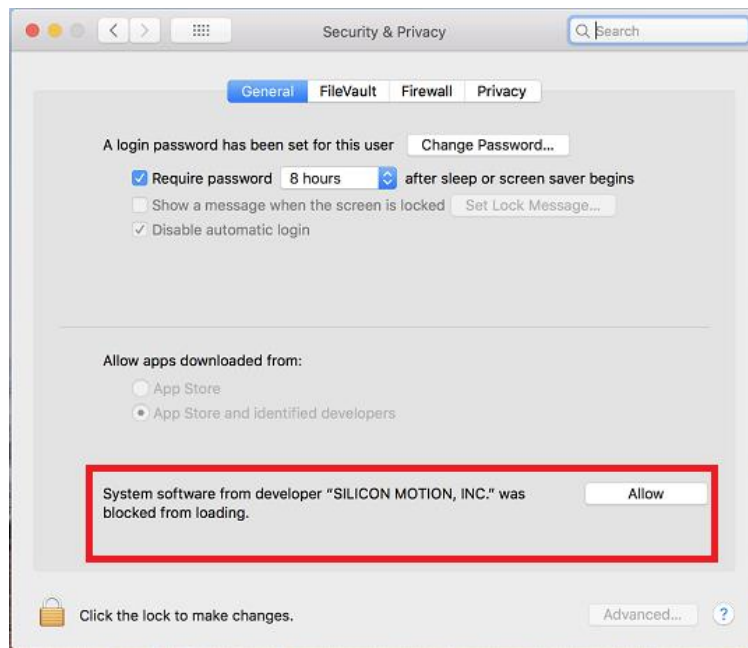


Please do the following steps before you click the restart button to reboot the system.



This prompts the user to approve the KEXT in System Preferences > Security & Privacy as shown as below:





Then you can reboot the system to use the SiliconMotion USB Display.

This approval UI is only present in the Security & Privacy preferences pane for 30 minutes after the alert. Until the user approves the KEXT, future load attempts will cause the approval UI to reappear but will not trigger another user alert.

On some systems, the security clearance may not take automatically effect and the SiliconMotion USB Display Software will still not be functional after rebooting. In this case, simply run the installer process again to ensure all the software is correctly started.

The above information is documented in the following link of Apple tech note

<https://developer.apple.com/library/content/technotes/tn2459>

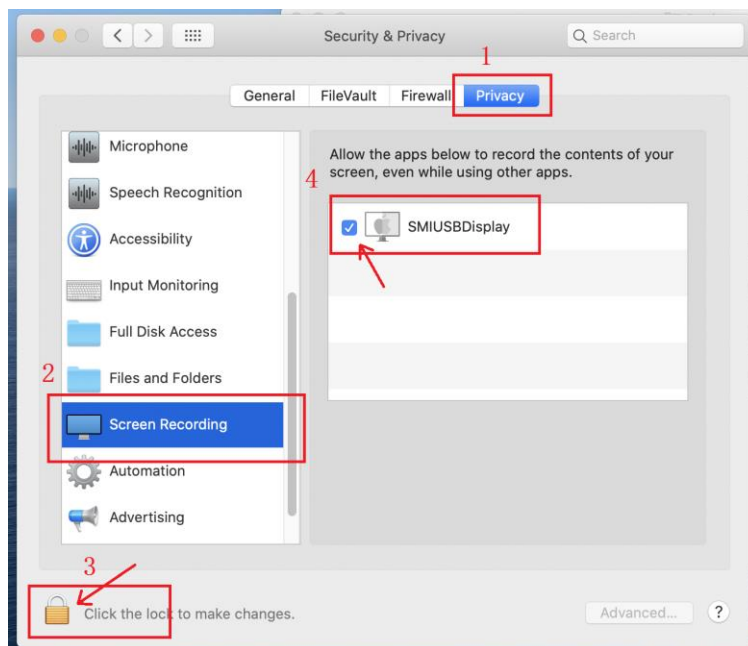
4.1.2 Screen turn black on macOS Catalina 10.15.x and above macOS

MacOS Catalina 10.15 and above macOS required user to provide more admission for record screen. In some case, the screens of SMI USB Display will turn black. To fix the behavior, we listed the steps below.

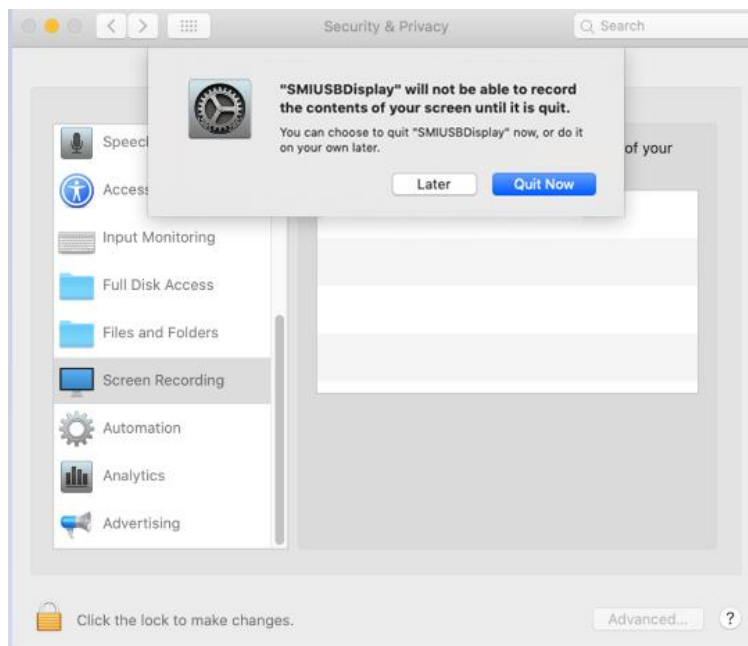
- After "Install" and "Restart system", open the "System Preferences".



- Open "Security & Privacy". Choose Tag of "Privacy". Click "Click the lock to" and enter password for management authority.
- **Enable "SMIUSBDisplay".**



- **Click "Quit now" and Reboot system.**



4.1.3 macOS USB Display Restrictions

The restrictions of SMI macOS USB Display driver are listed as the following:

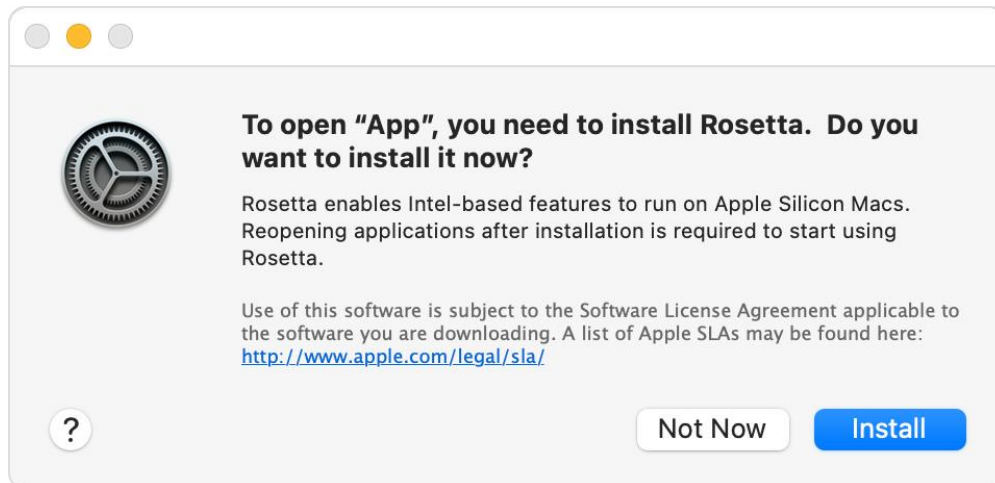
- 1) MacOS USB Display Driver can NOT store the main/secondary screen status in some cases.
- 2) Mirror mode on macOS 10.13.x High Sierra is not supported.



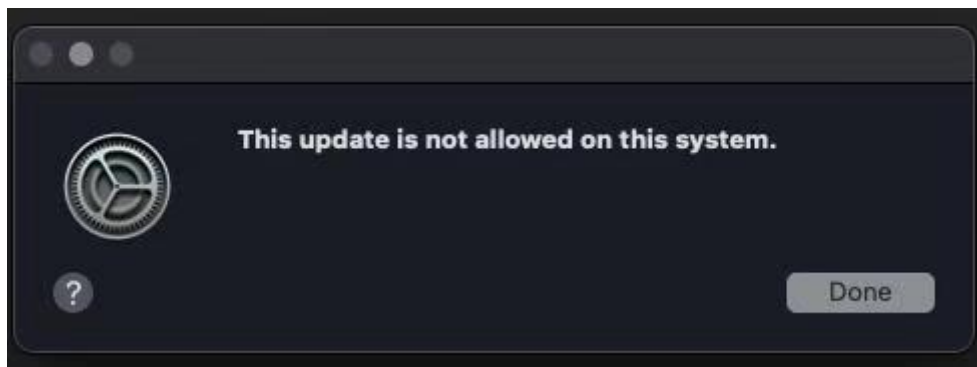
- 3) SMI USB display screen is black with only mouse cursor visible in some cases and device re-plug is required to recover.
- 4) Not support Apple M1 MacBook

4.2 Rosetta installation on Apple M1 MacBook

- Run SMI MacOS InstantView APP on Apple M1 MacBook, if the following page will be shown:



- Please click "Install", after installation, your display are now working properly.
- If remind "This update is not allowed on this system", please set as following steps



- Open "Security & Privacy". Choose Tag of "General". Click "Click the lock to" and enter password for management authority, tick "App Store and identified developers", keep in unlock status and install "Rosetta" again.

